

The Boca Breeze

3144 Sq. Ft.

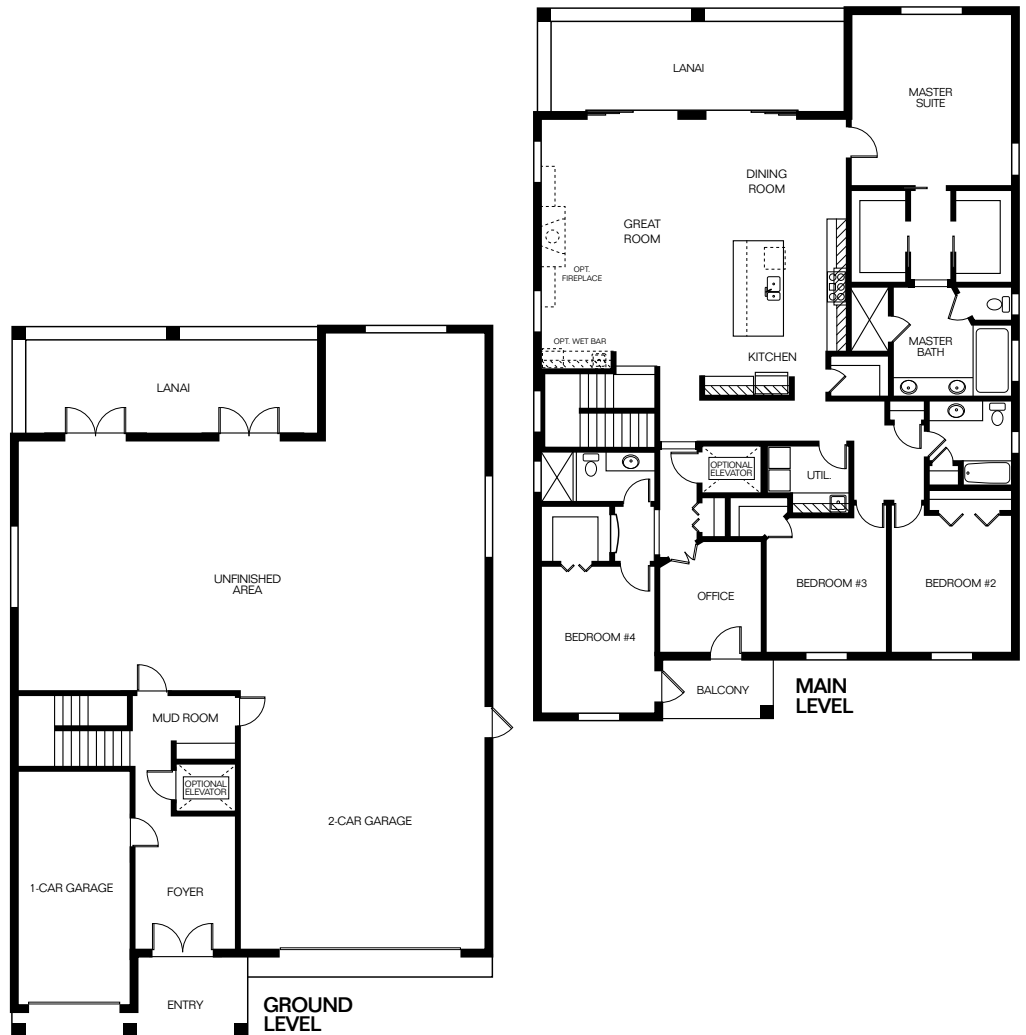
“Your Dream Starts Here.”



| | |
|------------------|--------------|
| Ground Level | 414 sq. ft. |
| Main Living Area | 2730 sq. ft. |
| Lanai | xxx sq. ft. |
| Balcony | xxx sq. ft. |

Explore this grand home plans with four bedrooms plus an office and more. Perfect for the large family or hosting multiple guests. This home has outstanding flexibility and lots of luxurious details. You'll especially love the owner's suite, which has the feeling of a private resort with a walk-in shower, window-side tub, and huge closets. There are three more spacious bedrooms, one even features a walk-in closet and private bath.

Other thoughtful touches include the two lanais, open concept kitchen, dining & great room with fireplace. The spacious unfinished area on the lower level, the kitchen's big pantry, and a snack bar on the central island.



Floorplans and elevation are an artist's concept only and are subject to change without prior notice. See builder for actual detailed landscape and plans.

Current as of 04.22.14

© 2014 Gulfwind Homes

