

The Biscayne

3687 Sq. Ft.

“Your Dream Starts Here.”



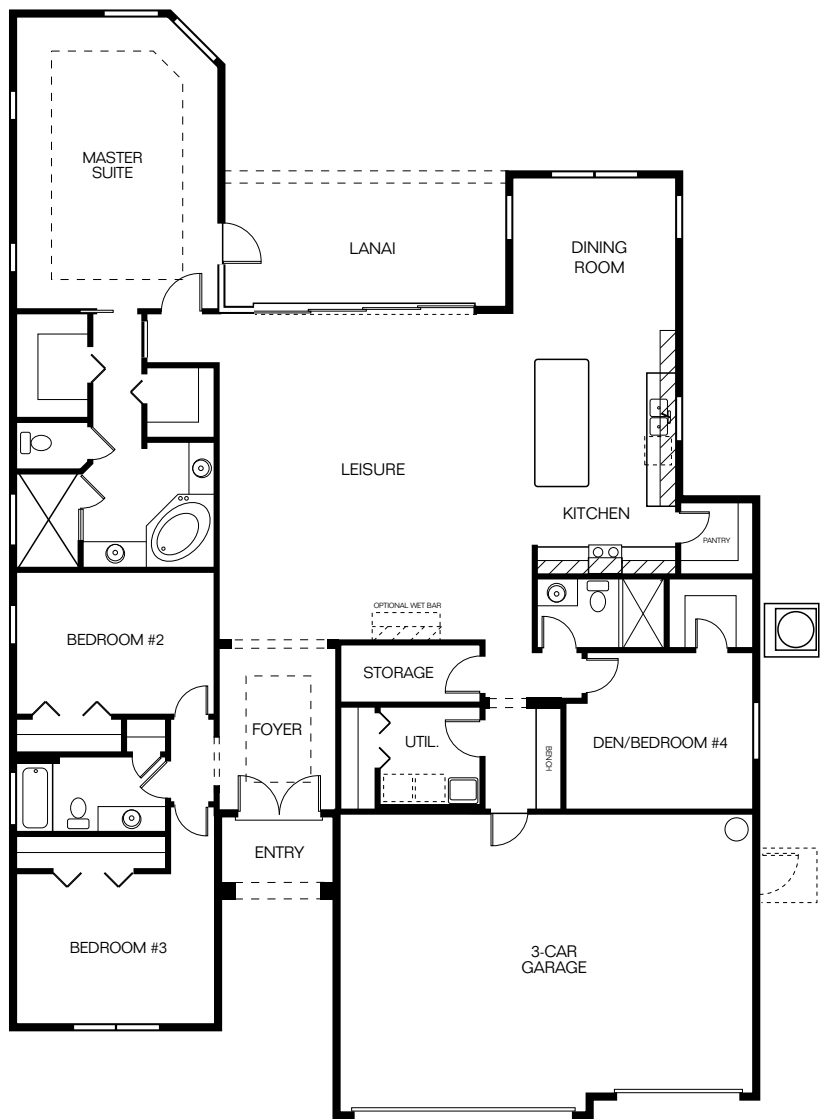
Main Level	2734 sq. ft.
Lanai	205 sq. ft.
Entry	47 sq. ft.
Garage	701 sq. ft.

Total Living 2734 sq. ft.

The Biscayne provides you with all the convenience of single-level living in an expansive, comfortable open floor plan.

You will enjoy an open concept design with a large leisure room and attached lanai, eat-in kitchen and a bright Dining Room.

The master bedroom with its tray ceiling has a large master bath featuring his and hers walk-in closets and vanities, in addition to a soaking tub and separate shower. Two additional bedrooms plus a den/ fourth bedroom round out the sleeping areas. A 3-car garage completes this exciting home.



Floorplans and elevation are an artist's concept only and are subject to change without prior notice. See builder for actual detailed landscape and plans.
Current as of 05.13.14
© 2014 Gulfwind Homes


GULFWIND HOMES
GULFWINDHOMES.COM


CGC 057478