

The Westcott

4237 sq. ft.

“Your Dream Starts Here.”



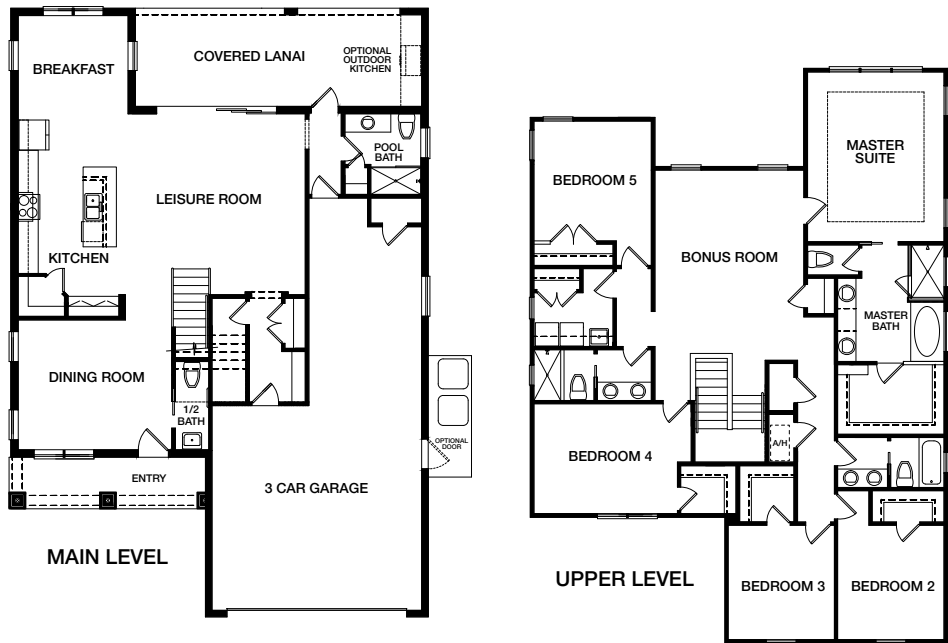
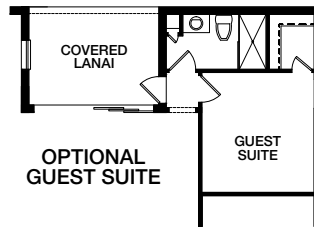
Elevation A

First Floor	1233 sq. ft.
Second Floor	1894 sq. ft.
Total Living	3127 sq. ft.
Covered Lanai	289 sq. ft.
Covered Entry	102 sq. ft.
3 Car Garage	719 sq. ft.
Total Covered	4237 sq. ft.

The Westcott floor plan offers easy living in a very functional layout. The comforts of this open floor plan are matched with the convenience of a 3 car garage that is perfect for parking your oversized toys or a workshop area.

The large family room and open kitchen with breakfast nook provides the ideal home for active family living. There is also a traditional dining room, a full bathroom plus a half bathroom, and plenty of storage located on the first floor.

The master suite upstairs includes a luxurious fully appointed master bath, and a very large walk-in closet. There are four additional bedrooms and two bathrooms, plus a huge bonus room that offers additional family living space.



Floorplans and elevation are an artist's concept only and are subject to change without prior notice. See builder for actual detailed landscape and plans. Current as 5.15.17 ©2017 Gulfwind Homes



Elevation B

Floorplans and elevation are an artist's concept only and are subject to change without prior notice. See builder for actual detailed landscape and plans. Current as 5.15.17 ©2017 Gulfwind Homes

