



“ Your  
Dream  
Starts  
Here.”

## ALSTON

Total 2297 Sq. Ft.

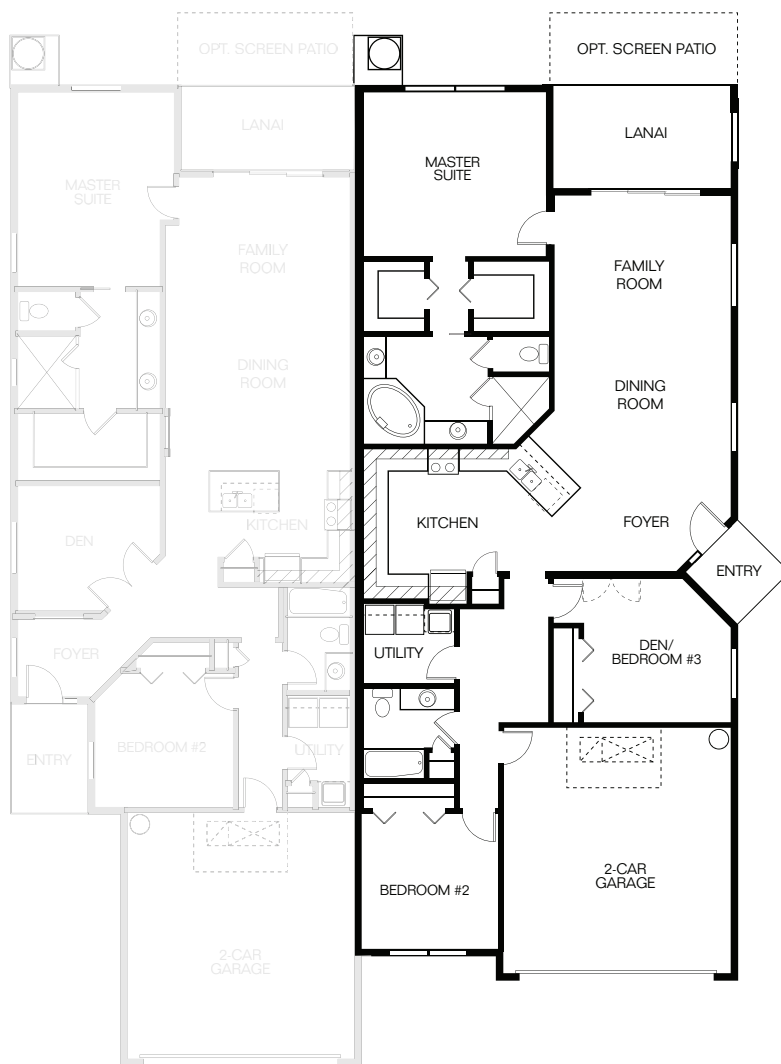
|               |              |
|---------------|--------------|
| Living Area   | 1743 sq. ft. |
| Covered Lanai | 129 sq. ft.  |
| Covered Entry | 18 sq. ft.   |
| Garage        | 407 sq. ft.  |

This beautiful single level home features an amazing master suite with two walk-in closets, two separate sink areas, a soaking tub and separate shower.

The Alston has 2 full bedrooms, a den and a spacious galley kitchen with breakfast bar & pantry. The comfortable open Dining and Family room leads out to a cozy lanai.

Quality features, a two car garage and an amazing location make this an exciting new home in a fine new neighborhood.

Enjoy all the convenience of single level living.



Prices may not include lot premiums, upgrades and options. Community Association and other fees may be required. Prices, promotions, incentives, features, options, amenities, floor plans, elevations, designs, materials and dimensions are subject to change without notice. Square footage and dimensions are estimated and may vary in actual construction. Community improvements and recreational features and amenities described are based upon current development plans with which are subject to change and which are under no obligation to be completed. Actual position of house on lot will be determined by the site plan and plot plan. Floor plans and elevations are artist's conception and are not intended to show specific detailing. Floor plans and elevation are an artist's concept only and are subject to change without prior notice. See builder for actual detailed landscape and plans.

Current as of 12.23.15

© 2015 Gulfwind Homes



**GULFWIND HOMES**

GULFWINDHOMES.COM



CGC 057478