

The Arlington

2560 sq. ft.

“Your Dream Starts Here”

ELEVATION C

Total Living	2560 sq. ft.
Covered Lanai	209 sq. ft.
Covered Entry	36 sq. ft.
3 Car Garage	626 sq. ft.
Total Covered	3431 sq. ft.

The **Arlington** model is a luxurious choice for you and your family. This open, single-story floor plan offers 4 spacious bedrooms, 3 baths and a 3 car garage.

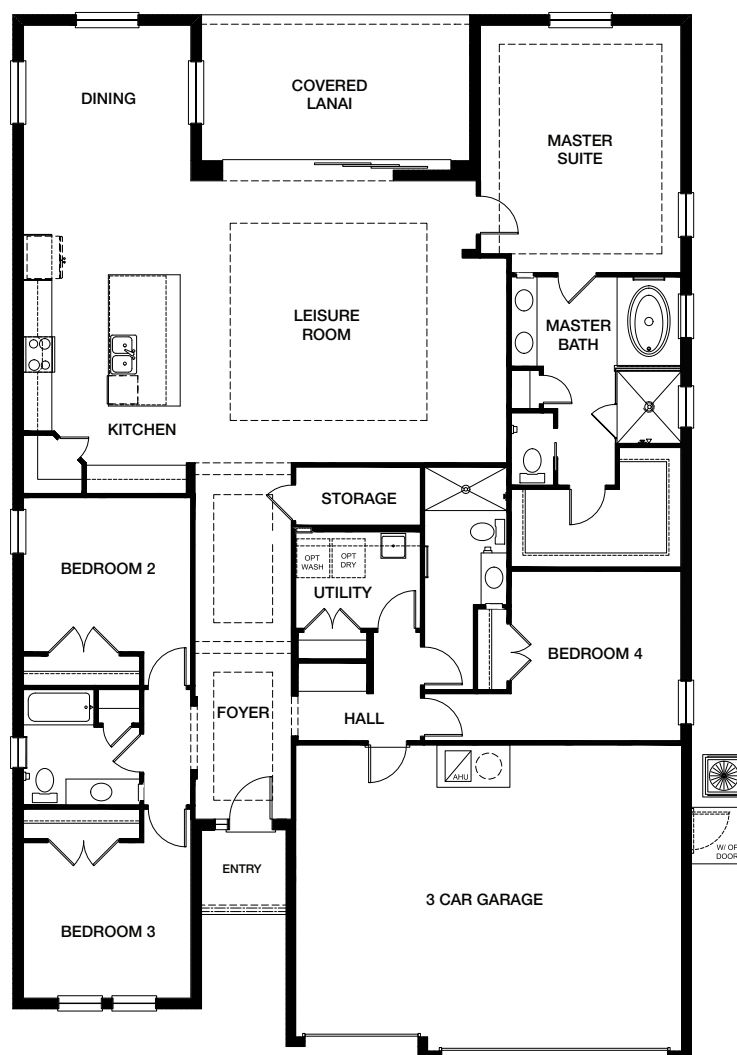
Once you enter the home you will notice the dramatic foyer, with impressive 12' tray ceilings and multiple archways. On the left is a hallway with a bedroom on either side, and a shared bathroom in between. To the right is another bedroom and bathroom that could also serve as an office.

The large gourmet kitchen features a massive island opening to the dining and leisure rooms. Three panel glass sliding doors to the lanai create a bright open living area.

The spacious master suite includes a separate shower and garden tub with large walk in closet.



Arlington Elevation A – Shingle Roof



Prices may not include lot premiums, upgrades and options. Community Association and other fees may be required. Prices, promotions, incentives, features, options, amenities, floor plans, elevations, designs, materials and dimensions are subject to change without notice. Square footage and dimensions are estimated and may vary in actual construction. Community improvements, recreational features and amenities described are based upon current development plans with which are subject to change and which are under no obligation to be completed. Actual position of house on lot will be determined by the site plan and plot plan. Floor plans and elevations are artist's conception and are not intended to show specific detailing. See Builder for actual detailed plans and specifications. Current as of 6.5.19 ©2019 Gulfwind Homes

