

# The Avalon

2770 sq. ft.

“Your Dream Starts Here”



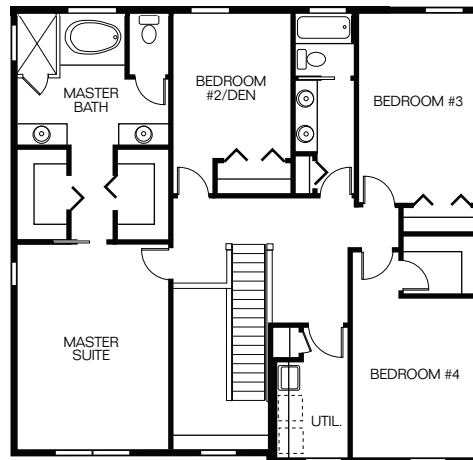
The Avalon | Elevation A – Shingle Roof

Total Living	2770 sq. ft.
Covered Lanai	176 sq. ft.
Covered Entry	66 sq. ft.
Garage	437 sq. ft.
<b>Total Covered</b>	<b>3449 sq. ft.</b>

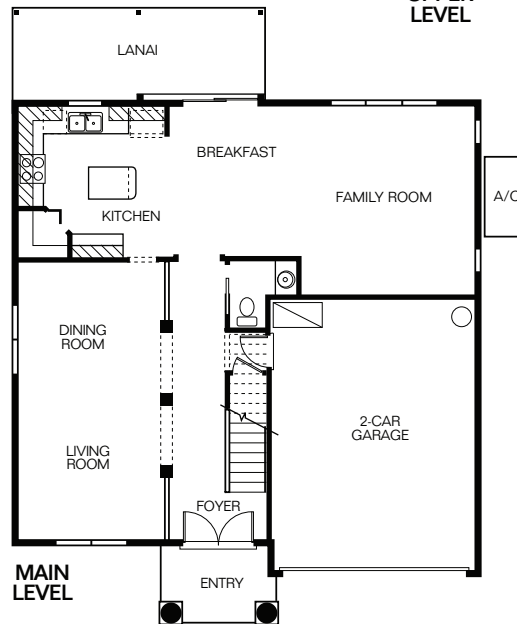
Enjoy the quiet comforts of the Avalon, a beautiful 4 bedroom family home.

This well designed home features distinct living spaces with quality features and construction. The main level of this open concept home features plentiful natural light and comfortable rooms with a casual flow.

Everyone will have plenty of space with the 4 fully appointed bedrooms. The master suite is a relaxing retreat with a master bath featuring separate vanities, a soaking tub and separate shower, his and hers walk-in closets complete the functionality of this space.



UPPER LEVEL



MAIN LEVEL



**GULFWIND HOMES**

GULFWINDHOMES.COM



Prices may not include lot premiums, upgrades and options. Community Association and other fees may be required. Prices, promotions, incentives, features, options, amenities, floor plans, elevations, designs, materials and dimensions are subject to change without notice. Square footage and dimensions are estimated and may vary in actual construction. Community improvements, recreational features and amenities described are based upon current development plans with which are subject to change and which are under no obligation to be completed. Actual position of house on lot will be determined by the site plan and plot plan. Floor plans and elevations are artist's conception and are not intended to show specific detailing. See Builder for actual detailed plans and specifications. Current as of 6.5.19 ©2019 Gulfwind Homes