

The Braylon

4127 Sq. Ft.

“ Your
Dream
Starts
Here.”



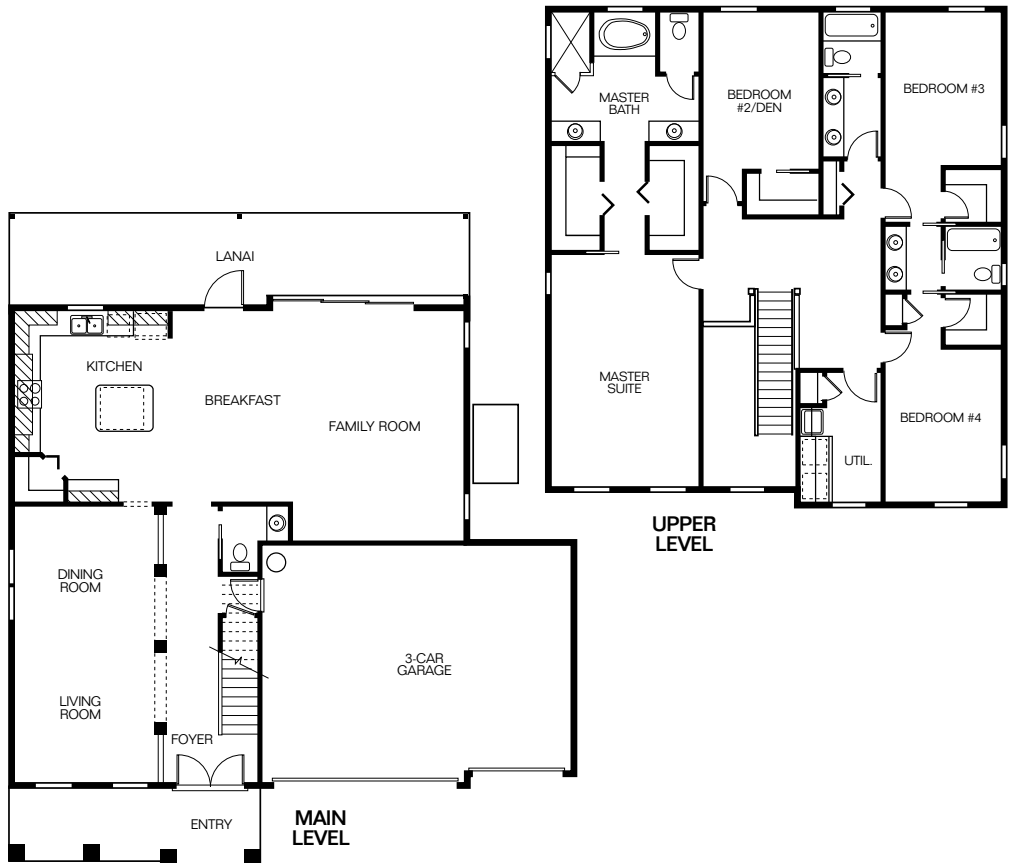
First Floor 1344 sq. ft.
Second Floor 1728 sq. ft.
Lanai 325 sq. ft.
Entry 143 sq. ft.
Garage 587 sq. ft.

Total Living 3072 sq. ft.

Coming home will be a joy when your home is the Braylon, a beautiful, well appointed 3000+ sq. ft. 4 bedroom.

Entertain in style in this open concept plan, featuring plentiful natural light with a huge kitchen featuring a massive center island which open to the luxurious family room and relaxing lanai.

Upstairs you will find four spacious, fully appointed bedrooms. The master suite offers relaxing space with his and hers walk-in closets and bath; with separate vanities, a soaking tub and separate shower.



Floorplans and elevation are an artist's concept only and are subject to change without prior notice. See builder for actual detailed landscape and plans.

Current as of 10.11.13

© 2012 Gulfwind Homes


GULFWIND HOMES
GULFWINDHOMES.COM


CGC 057478 HOME BUYERS WARRANTY