

VILLAS AT San Christopher

"Your Dream
Starts Here"

DOUBLE ALSTON

Villa

Total 2322 sq. ft.

| | |
|---------------|--------------|
| Living Area | 1768 sq. ft. |
| Covered Lanai | 129 sq. ft. |
| Covered Entry | 18 sq. ft. |
| Garage | 407 sq. ft. |

This beautiful single level home features an amazing master suite with two walk in closets, two separate sink areas, a soaking tub and separate shower.

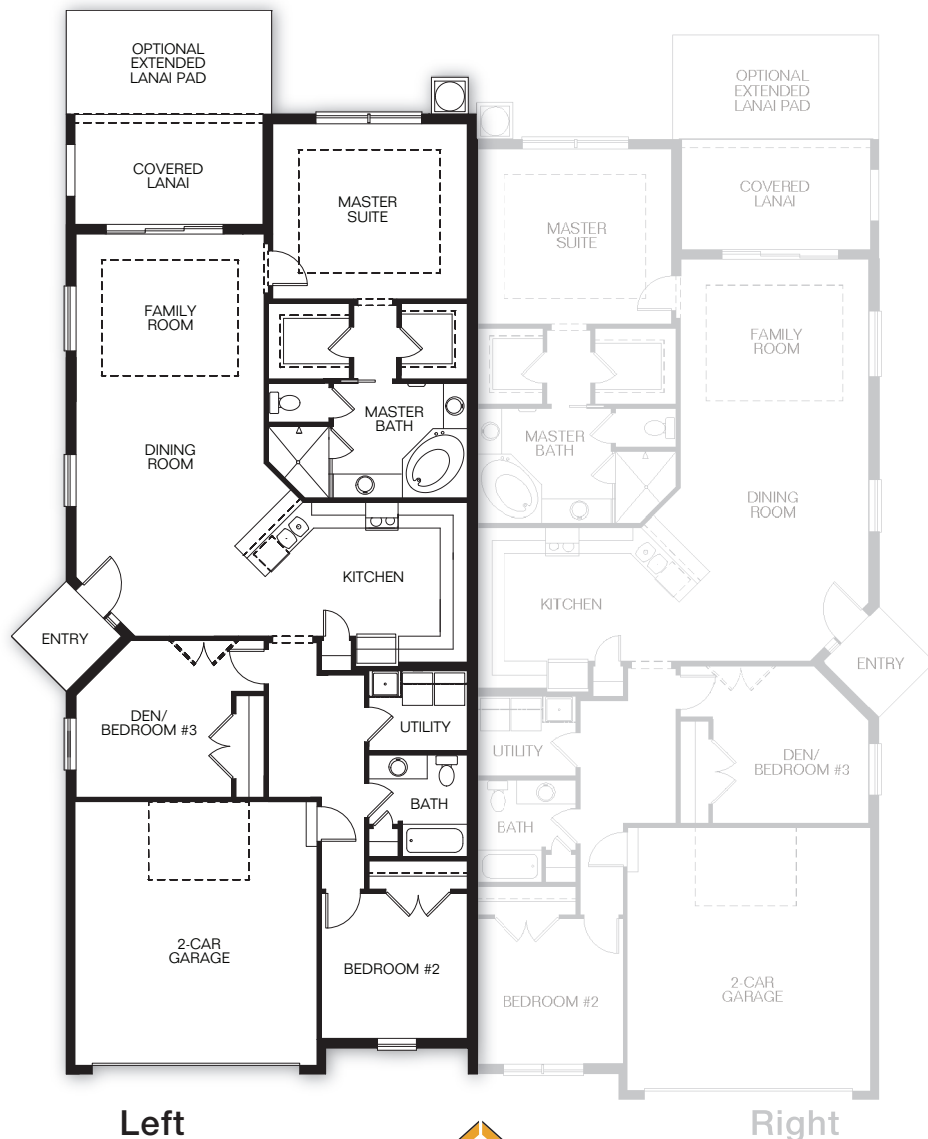
The Alston has 3 full bedrooms, (with an option to convert bedroom 3 to a den). Spacious kitchen with breakfast bar and pantry. The comfortable open dining and family room leads out to a cozy lanai.

Quality features, a two car garage and an amazing location make this an exciting new home in a beautiful new neighborhood.

Enjoy all the convenience of single level living.



Double Alston - Shingle Roof



Left

Right

GULFWIND HOMES
GULFWINDHOMES.COM



Prices may not include lot premiums, upgrades and options. Community Association and other fees may be required. Prices, promotions, incentives, features, options, amenities, floor plans, elevations, designs, materials and dimensions are subject to change without notice. Square footage and dimensions are estimated and may vary in actual construction. Community improvements, recreational features and amenities described are based upon current development plans with which are subject to change and which are under no obligation to be completed. Actual position of house on lot will be determined by the site plan and plot plan. Floor plans and elevations are artist's conception and are not intended to show specific detailing. See Builder for actual detailed plans and specifications. Current as of 6.12.18 ©2018 Gulfwind Homes

VILLAS AT San Christopher

"Your Dream
Starts Here"

DOUBLE ALSTON

Villa

Total 2322 sq. ft.

| | |
|---------------|--------------|
| Living Area | 1768 sq. ft. |
| Covered Lanai | 129 sq. ft. |
| Covered Entry | 18 sq. ft. |
| Garage | 407 sq. ft. |

This beautiful single level home features an amazing master suite with two walk in closets, two separate sink areas, a soaking tub and separate shower.

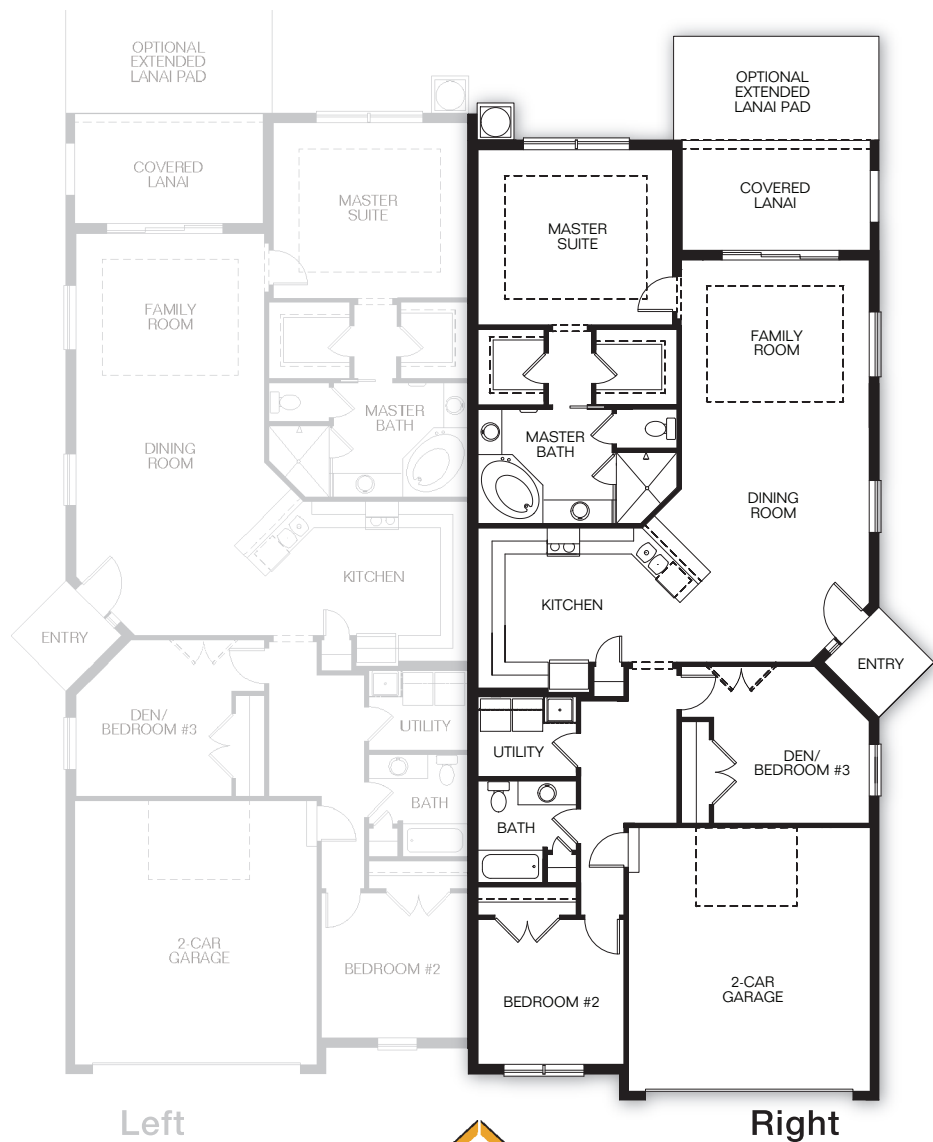
The Alston has 3 full bedrooms, (with an option to convert bedroom 3 to a den). Spacious kitchen with breakfast bar and pantry. The comfortable open dining and family room leads out to a cozy lanai.

Quality features, a two car garage and an amazing location make this an exciting new home in a beautiful new neighborhood.

Enjoy all the convenience of single level living.



Double Alston - Shingle Roof



GULFWIND HOMES
GULFWINDHOMES.COM



Prices may not include lot premiums, upgrades and options. Community Association and other fees may be required. Prices, promotions, incentives, features, options, amenities, floor plans, elevations, designs, materials and dimensions are subject to change without notice. Square footage and dimensions are estimated and may vary in actual construction. Community improvements, recreational features and amenities described are based upon current development plans with which are subject to change and which are under no obligation to be completed. Actual position of house on lot will be determined by the site plan and plot plan. Floor plans and elevations are artist's conception and are not intended to show specific detailing. See Builder for actual detailed plans and specifications. Current as of 6.12.18 ©2018 Gulfwind Homes