



## The Caspian

3312 sq. ft.

*"Your Dream Starts Here"*

### ELEVATION A

Total Living 3312 sq. ft.

Covered Lanai 596 sq. ft.

Covered Entry 162 sq. ft.

3 Car Garage 842 sq. ft.

Total Covered 4912 sq. ft.

This stunning open concept includes a large leisure room with access to your beautiful covered lanai. The lanai offers an additional space large enough for a fireplace, outdoor kitchen or even an added spa.

Gourmet kitchen includes a large pantry, expansive countertops and a granite island with seating ledge with the ability to add additional cabinetry facing the leisure room.

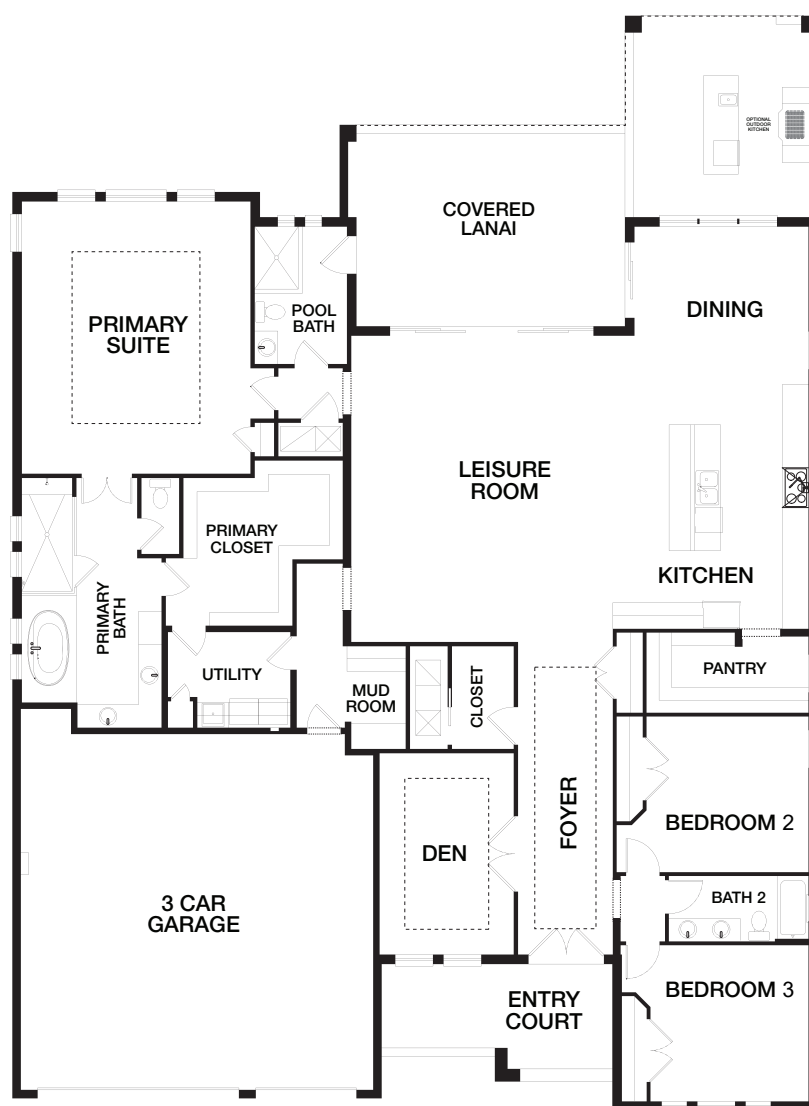
This 3 bedroom plus den home includes a large primary suite with tray ceiling, huge walk-in closet, soaking tub, shower and a convenient exit to the garage via the utility room.

A covered entry court opens into the foyer which includes access to the formal den with french doors and tray ceilings.

A spacious 3 car garage completes this home with plenty of room for a workshop, golf cart and additional storage space.



Caspian Elevation A



Prices may not include lot premiums, upgrades and options. Community Association and other fees may be required. Prices, promotions, incentives, features, options, amenities, floor plans, elevations, designs, materials and dimensions are subject to change without notice. Square footage and dimensions are estimated and may vary in actual construction. Community improvements, recreational features and amenities described are based upon current development plans with which are subject to change and which are under no obligation to be completed. Actual position of house on lot will be determined by the site plan and plot plan. Floor plans and elevations are artist's conception and are not intended to show specific detailing. See Builder for actual detailed plans and specifications. Current as of 2.4.2022 ©2022 Gulfwind Homes