



"Your Dream Starts Here"

UNIT A

First Floor	1062 sq. ft.
Second Floor	955 sq. ft.
Total Living	2017 sq. ft.
Covered Lanai	91 sq. ft.
Covered Entry	13 sq. ft.
2 Car Garage	388 sq. ft.
Total Covered	2509 sq. ft.

The Towns at Long Bayou provides you peaceful living with this comfortable open floor plan with plenty of space for all your needs.

This large end unit features an open floor plan with vaulted ceilings opening to the loft above. Plentiful windows fill the space with natural light and a powder room is located at the base of the stairs.

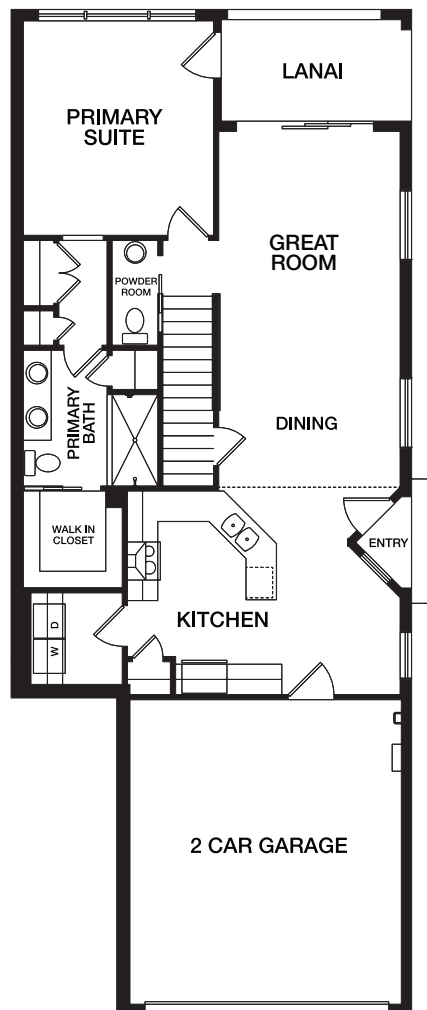
The large kitchen features a peninsula island, pantry, and a dedicated utility room.

The convenient first floor primary suite opens to the lanai and has a large bathroom with his and her sinks. This area offers plenty of storage space with a huge walk in closet at the end.

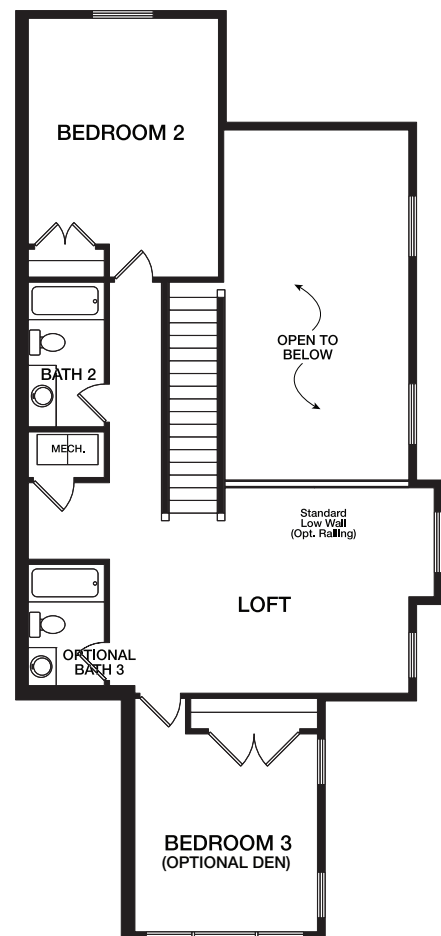
Upstairs the large loft overlooks the great room and is separated by two bedrooms and a bathroom. There are available options to convert the third bedroom into a den, as well as adding a third bathroom.



Unit A / Right



LOWER LEVEL



UPPER LEVEL



Prices may not include lot premiums, upgrades and options. Community Association and other fees may be required. Prices, promotions, incentives, features, options, amenities, floor plans, elevations, designs, materials and dimensions are subject to change without notice. Square footage and dimensions are estimated and may vary in actual construction. Community improvements, recreational features and amenities described are based upon current development plans with which are subject to change and which are under no obligation to be completed. Actual position of house on lot will be determined by the site plan and plot plan. Floor plans and elevations are artist's conception and are not intended to show specific detailing. See Builder for actual detailed plans and specifications. Current as of 3.9.22 ©2022 Gulfwind Homes





"Your Dream Starts Here"

UNIT B

First Floor	821 sq. ft.
Second Floor	1242 sq. ft.
Total Living	2063 sq. ft.
Covered Lanai	135 sq. ft.
Covered Entry	38 sq. ft.
2 Car Garage	388 sq. ft.
Total Covered	2624 sq. ft.

The Towns at Long Bayou provides you with all the conveniences of town home living in a comfortable open floor plan with plenty of space for all your needs.

The Unit B plan offers a clean first floor plan with a large kitchen overlooking the dining and great rooms. There is enough room for a small table and chairs for a guest to enjoy the cooking.

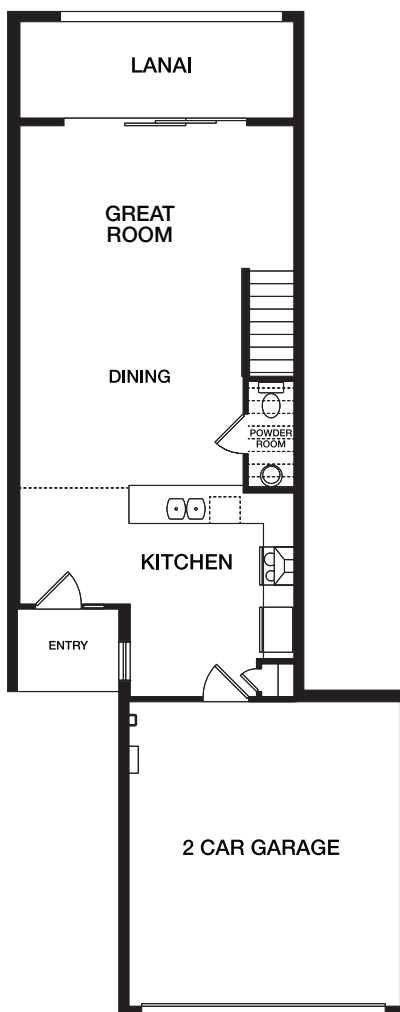
The great room has a large slider opening to a full width covered lanai, and a powder room located beneath the staircase.

Upstairs offers a retreat with two large bedrooms and a smaller guest room. The primary suite has a large walk in closet and attached bathroom with his and her sinks.

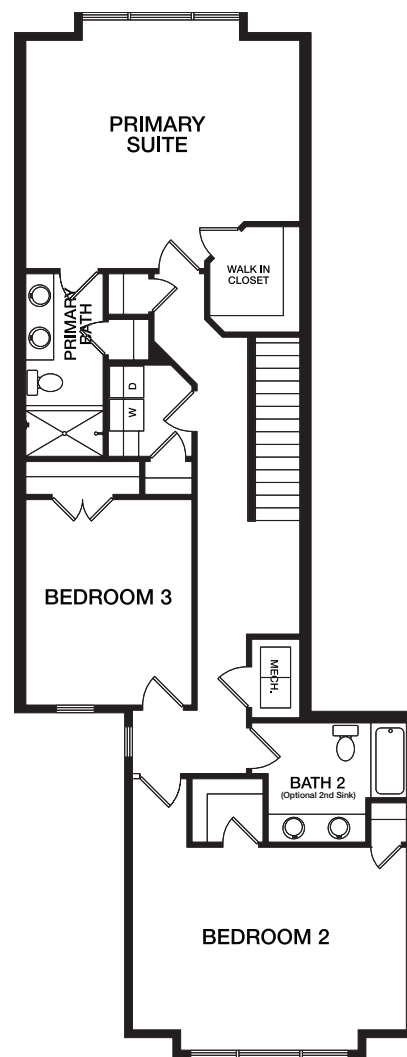
A second full bathroom offers an optional twin sink vanity, while a dedicated laundry room makes life easier.



Unit B / Right



LOWER LEVEL



UPPER LEVEL



Prices may not include lot premiums, upgrades and options. Community Association and other fees may be required. Prices, promotions, incentives, features, options, amenities, floor plans, elevations, designs, materials and dimensions are subject to change without notice. Square footage and dimensions are estimated and may vary in actual construction. Community improvements, recreational features and amenities described are based upon current development plans with which are subject to change and which are under no obligation to be completed. Actual position of house on lot will be determined by the site plan and plot plan. Floor plans and elevations are artist's conception and are not intended to show specific detailing. See Builder for actual detailed plans and specifications. Current as of 3.9.22 ©2022 Gulfwind Homes



"Your Dream Starts Here"

UNIT C

First Floor	559 sq. ft.
Second Floor	937 sq. ft.
Total Living	1496 sq. ft.
Covered Lanai	117 sq. ft.
Covered Entry	27 sq. ft.
1 Car Garage	258 sq. ft.
Total Covered	1898 sq. ft.

The Towns at Long Bayou provides you with all the conveniences of town home living in a comfortable open floor plan with plenty of space for all your needs.

The Unit C plan offers a simple first floor plan with a large kitchen overlooking the dining and great rooms. There is enough room for a small table and chairs for a guest to enjoy the cooking.

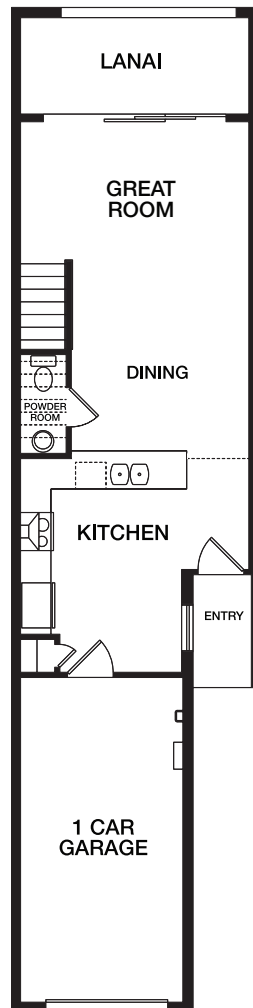
The great room has a large slider opening to a full width covered lanai, and a powder room located beneath the staircase.

Upstairs the large loft area offers plenty of space for relaxing and watching a movie, or even a home office. The primary suite has a large window to take in the light, along with a large walk in closet and attached bathroom.

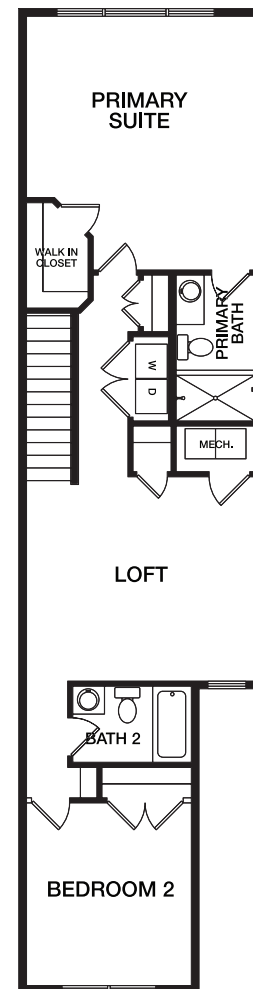
A second bedroom and bathroom complete the upstairs, separated by a washer and dryer closet.



Unit C / Right



LOWER LEVEL



UPPER LEVEL



Prices may not include lot premiums, upgrades and options. Community Association and other fees may be required. Prices, promotions, incentives, features, options, amenities, floor plans, elevations, designs, materials and dimensions are subject to change without notice. Square footage and dimensions are estimated and may vary in actual construction. Community improvements, recreational features and amenities described are based upon current development plans with which are subject to change and which are under no obligation to be completed. Actual position of house on lot will be determined by the site plan and plot plan. Floor plans and elevations are artist's conception and are not intended to show specific detailing. See Builder for actual detailed plans and specifications. Current as of 3.9.22 ©2022 Gulfwind Homes





"Your Dream Starts Here"

UNIT A

First Floor	1062 sq. ft.
Second Floor	955 sq. ft.
Total Living	2017 sq. ft.
Covered Lanai	91 sq. ft.
Covered Entry	13 sq. ft.
2 Car Garage	388 sq. ft.
Total Covered	2509 sq. ft.

The Towns at Long Bayou provides you peaceful living with this comfortable open floor plan with plenty of space for all your needs.

This large end unit features an open floor plan with vaulted ceilings opening to the loft above. Plentiful windows fill the space with natural light and a powder room is located at the base of the stairs.

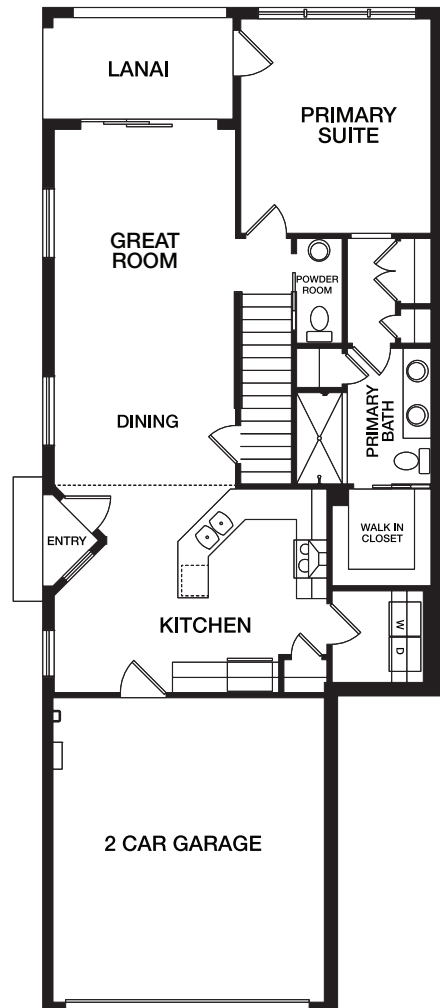
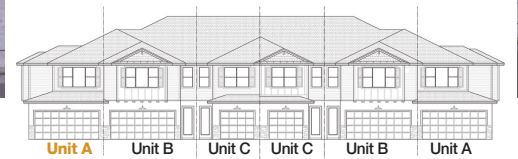
The large kitchen features a peninsula island, pantry, and a dedicated utility room.

The convenient first floor primary suite opens to the lanai and has a large bathroom with his and her sinks. This area offers plenty of storage space with a huge walk in closet at the end.

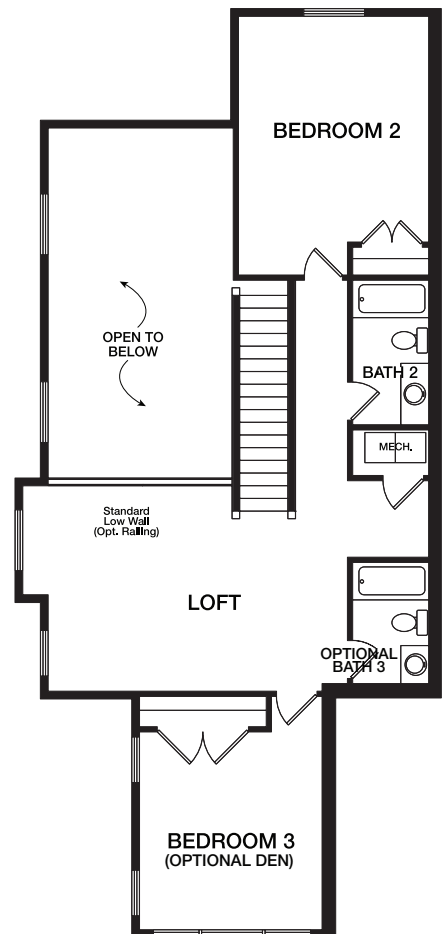
Upstairs the large loft overlooks the great room and is separated by two bedrooms and a bathroom. There are available options to convert the third bedroom into a den, as well as adding a third bathroom.



Unit A / Left



LOWER LEVEL



UPPER LEVEL



Prices may not include lot premiums, upgrades and options. Community Association and other fees may be required. Prices, promotions, incentives, features, options, amenities, floor plans, elevations, designs, materials and dimensions are subject to change without notice. Square footage and dimensions are estimated and may vary in actual construction. Community improvements, recreational features and amenities described are based upon current development plans with which are subject to change and which are under no obligation to be completed. Actual position of house on lot will be determined by the site plan and plot plan. Floor plans and elevations are artist's conception and are not intended to show specific detailing. See Builder for actual detailed plans and specifications. Current as of 3.9.22 ©2022 Gulfwind Homes





"Your Dream Starts Here"

UNIT B

First Floor	821 sq. ft.
Second Floor	1242 sq. ft.
Total Living	2063 sq. ft.
Covered Lanai	135 sq. ft.
Covered Entry	38 sq. ft.
2 Car Garage	388 sq. ft.
Total Covered	2624 sq. ft.

The Towns at Long Bayou provides you with all the conveniences of town home living in a comfortable open floor plan with plenty of space for all your needs.

The Unit B plan offers a clean first floor plan with a large kitchen overlooking the dining and great rooms. There is enough room for a small table and chairs for a guest to enjoy the cooking.

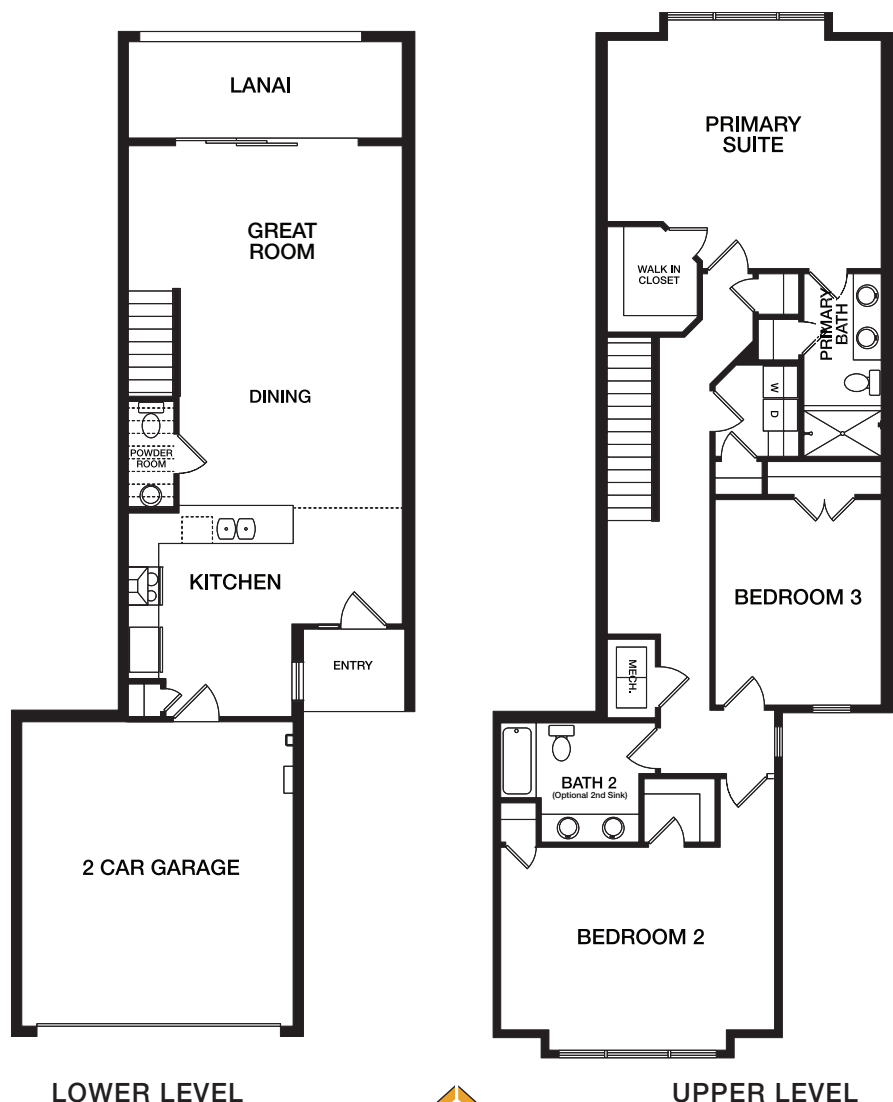
The great room has a large slider opening to a full width covered lanai, and a powder room located beneath the staircase.

Upstairs offers a retreat with two large bedrooms and a smaller guest room. The primary suite has a large walk in closet and attached bathroom with his and her sinks.

A second full bathroom offers an optional twin sink vanity, while a dedicated laundry room makes life easier.



Unit B / Left



LOWER LEVEL

UPPER LEVEL



Prices may not include lot premiums, upgrades and options. Community Association and other fees may be required. Prices, promotions, incentives, features, options, amenities, floor plans, elevations, designs, materials and dimensions are subject to change without notice. Square footage and dimensions are estimated and may vary in actual construction. Community improvements, recreational features and amenities described are based upon current development plans with which are subject to change and which are under no obligation to be completed. Actual position of house on lot will be determined by the site plan and plot plan. Floor plans and elevations are artist's conception and are not intended to show specific detailing. See Builder for actual detailed plans and specifications. Current as of 3.9.22 ©2022 Gulfwind Homes





"Your Dream Starts Here"

UNIT C

First Floor	559 sq. ft.
Second Floor	937 sq. ft.
Total Living	1496 sq. ft.
Covered Lanai	117 sq. ft.
Covered Entry	27 sq. ft.
1 Car Garage	258 sq. ft.
Total Covered	1898 sq. ft.

The Towns at Long Bayou provides you with all the conveniences of town home living in a comfortable open floor plan with plenty of space for all your needs.

The Unit C plan offers a simple first floor plan with a large kitchen overlooking the dining and great rooms. There is enough room for a small table and chairs for a guest to enjoy the cooking.

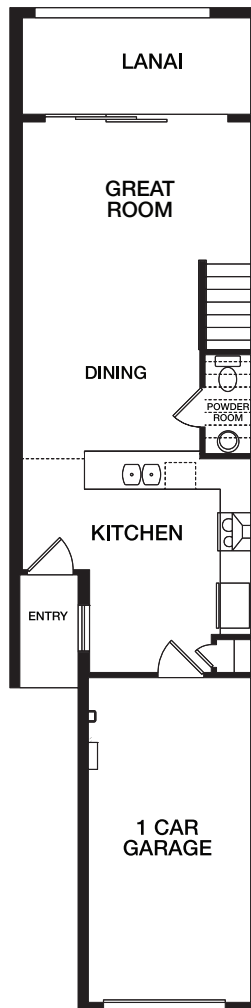
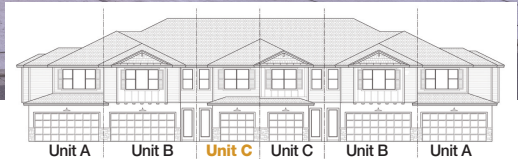
The great room has a large slider opening to a full width covered lanai, and a powder room located beneath the staircase.

Upstairs the large loft area offers plenty of space for relaxing and watching a movie, or even a home office. The primary suite has a large window to take in the light, along with a large walk in closet and attached bathroom.

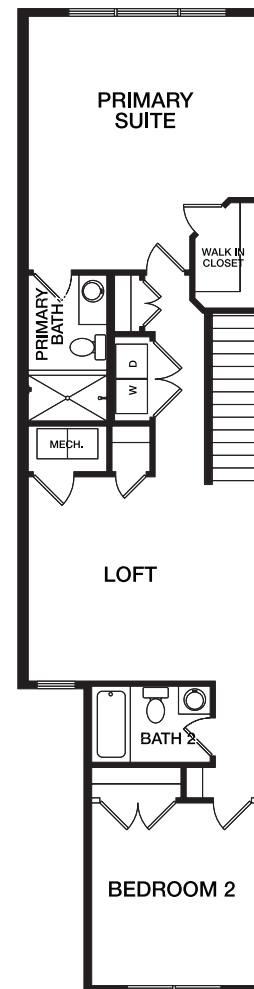
A second bedroom and bathroom complete the upstairs, separated by a washer and dryer closet.



Unit C / Left



LOWER LEVEL



UPPER LEVEL



Prices may not include lot premiums, upgrades and options. Community Association and other fees may be required. Prices, promotions, incentives, features, options, amenities, floor plans, elevations, designs, materials and dimensions are subject to change without notice. Square footage and dimensions are estimated and may vary in actual construction. Community improvements, recreational features and amenities described are based upon current development plans with which are subject to change and which are under no obligation to be completed. Actual position of house on lot will be determined by the site plan and plot plan. Floor plans and elevations are artist's conception and are not intended to show specific detailing. See Builder for actual detailed plans and specifications. Current as of 3.9.22 ©2022 Gulfwind Homes